

## 2<sup>nd</sup> Grade

### Comparing Temperatures in the Classroom to the High Performance HVAC Monitoring System At Snow Creek

<u>Materials Needed:</u> 4 Thermometers Access to Tracer Summit Graph Paper Markers, pencils	<u>Teacher Preparation:</u> Take students to the communications room to show them the computer that monitors the school wide HVAC system.
--	--

Students should place 4 thermometers around the room and allow acclimating for 15 minutes.

Students should then record the thermometer temperatures.

Thermometer	Temperature
1	
2	
3	
4	
Add all temperatures together	=
Divide by 4	= this is your average room temperature

Students will then compare their temperature recording with the Tracer Summit Recording by visiting the Communications room and locating their room on the zone map and looking for their temperature.

If their outcomes are very close they will be able to draw conclusions, if there are great differences in the temperatures, the experiment can be done again.

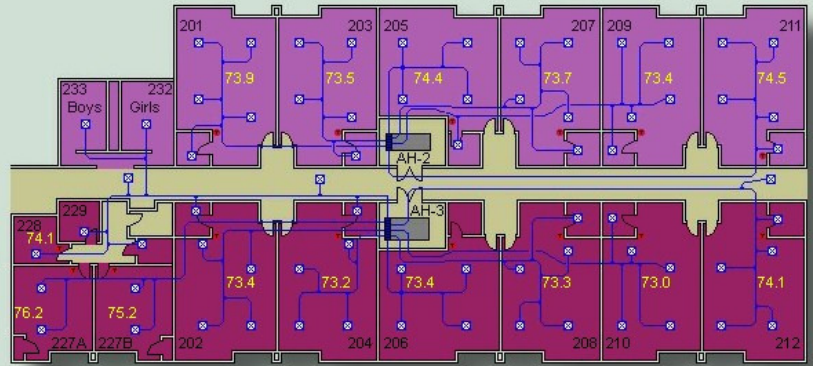
Students will be able to see that the energy saving features of our HVAC system are in place to keep a steady temperature, and not use unnecessary energy.

Here is a screen shot of Tracer Summit.



- Tracer Summit
- SNOWCREK
  - AH-1
  - AH-10
  - AH-11
  - AH-12
  - AH-13
  - AH-14
  - AH-2
  - AH-3
  - AH-4
  - AH-5
  - AH-6
  - AH-7
  - AH-8
  - AH-9
  - AREA 1 WING
  - AREA 2 WING
  - AREA 3 WING
  - AREA 4 WING
  - AREA 5 WING
  - AREA 5 WING GYM C
  - Chiller (LonTalk)-1
  - Chiller (LonTalk)-2
  - KEY FLOORPLAN
  - MISC
  - PLANT PIPING
  - TOV STATUS
  - ZONE INFO AH-11
  - ZONE INFO AH-2
  - ZONE INFO AH-3
  - ZONE INFO AH-4
  - ZONE INFO AH-5
  - ZONE INFO AH-6
  - ZONE INFO AH-7
  - ZONE INFO AH-8
  - ZONE INFO AH-9

KEY FLOORPLAN



Snow Creek Elem.  
Area 2